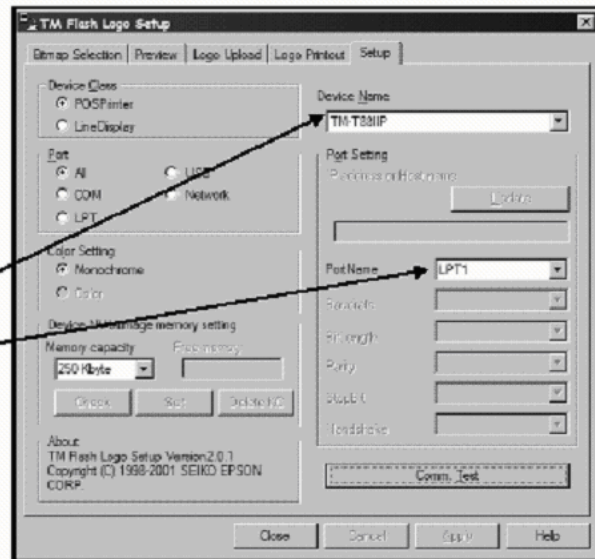


## Uploading Logos

Follow these steps to burn logos into your Epson or compatible receipt printer.

1. From the Receipt printer logo setup screen click on the upload button.
2. You will then be presented with the following screen
3. In device name ensure that TM-T88IIP or TM-T88IIIP is selected. This model is the particular model of receipt printer that you own, this can be found on a sticker on the side of the printer.
4. Ensure that the Port Name is set to LPT1



The NVRam logo burning utility is located in the FREEPOS\PRG directory. It should be noted that only LPT1 can be used to burn a logo. Other LPT ports seem to be unsupported by Epson/Seiko.

If you wish, you may burn logo's for all your printers from one machine when doing a system setup.

### Summary Of Logo Setup:

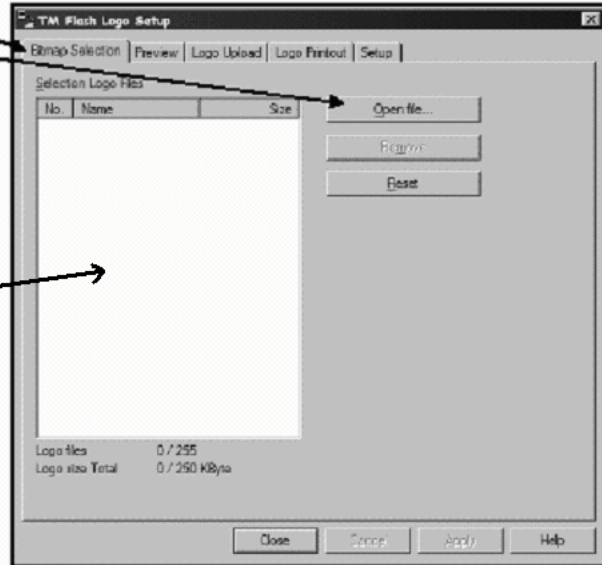
1. Send the logo to the Non-Volatile RAM of the Epson printer
2. Turn the printer OFF and then ON again
3. Configure FreePOS to send the "print logo" command BEFORE a receipt is printed.

5. Left click the bitmap selection tab
6. Left click on the Open file button
7. In the open box navigate to the directory where you have saved your images.
8. Select your image and click on open.
9. Your image will now be shown in the grid

**NOTE:**

It is best to make BMP images that are 90x90, 180x180 or 270x270. Don't create a color BMP... it won't look good.

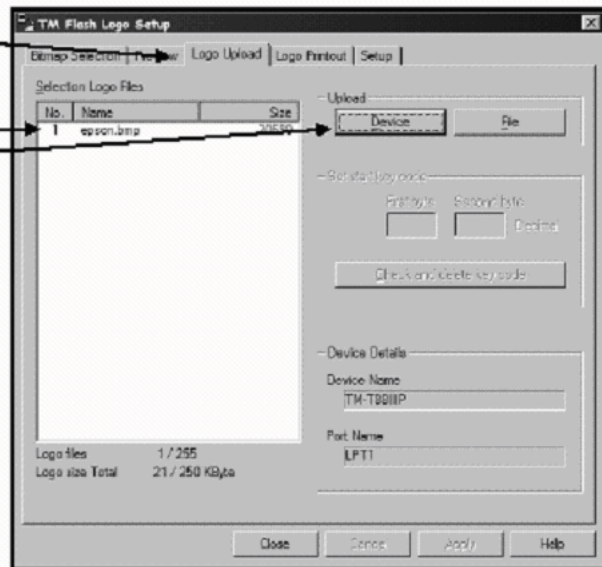
Use PAINT to make your BMP file.

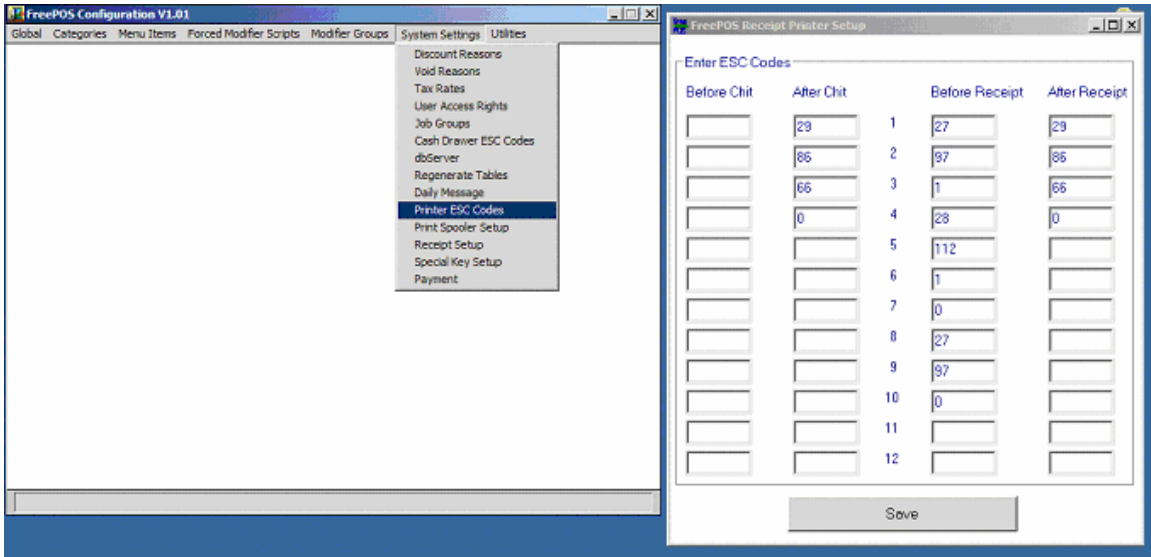


10. Left click the Logo Upload tab
11. This will then display the following screen. The list will contain all of the logos to upload
12. Left click on the device button
13. This will then show the logos being uploaded.
14. Left click on close
15. The logos have now been uploaded to the receipt printers

**NOTE:**

If your logo doesn't print, be sure to turn the printer OFF and then ON again. Also, restart PSPooler after changing ESC codes.





Now go into POS-CFG and select **Printer ESC Codes**

In the **BEFORE RECEIPT** column, enter these codes (as shown above).

27  
 97  
 1  
 28  
 112  
 1  
 0  
 27  
 97  
 0

Leave spaces 11 and 12 blank.

After entering the codes, be sure to RESTART THE PSPOOLER or the logo will not print.